



WORLD'S BEST
ALLOY BULLBARS

East Coast Bullbars (ECB Pty Ltd)

Tel: 07 3897 5700

Fax: 07 3283 1168

ecb@ecb.com.au www.ecb.com.au

29 Snook St
Clontarf QLD 4019
Australia

Po Box 122
Margate QLD 4019
Australia

BF31SY

REPLACES: 08.02.10
REVISED: 12.01.2018

FITTING INSTRUCTIONS

FORD TERRITORY 05/04-04/09 BIG TUBE™ PROTECTION BAR WITH FOG LIGHTS VEHICLE FRONTAL PROTECTION SYSTEM (VFPS) FOR AIR BAG & ADR COMPLIANT VEHICLES

Check installation hardware before commencing.

NOTE: 3/8 air drill and similar size electric drill is required otherwise remove bumper cover.

1. Lift bonnet.
2. Turn wheels full lock.
3. Remove lower plastic air deflector by removing thirteen 7mm head screws. Slide down and rearward to remove. **See figure 1.**
4. Remove two plastic push in rivets and one PK self-tapper (each side) from plastic inner guards. **See figure 2.**
5. Trim out plastic grille in bumper cover. **See figures 3 and 4.**
6. Feed steel mounting system (supplied) behind bumper cover to protrude out though grille in bumper cover and up onto lower chassis lip. **See figures 5, 6 and 7.**
7. Support steel mounting system with jack. Ensure steel mounting system is as high up as possible on chassis lip and hard against steel radiator support. **See figures 8 and 9.**
8. Clamp rear of steel mounting system to chassis lip. **See figure 10.**
9. Pull plastic inner guard clear for access. Using centre mounting holes in steel mounting system as a guide, drill 10mm holes through chassis lip. **See figure 11.** Treat raw metal with rust inhibitor. Use 3/8 x 1 ½ bolts, nuts and washers (supplied). **TIGHTEN.**
10. Remove clamps. Drill 10mm rear holes though chassis lip. **NOTE:** Turn wheel lock outwards for each side for access. Treat raw metal with rust inhibitor. Use 3/8 x 1 ½ bolts, nuts and washers (supplied) **TIGHTEN. See figure 12.**
11. Repeat drilling procedure for front holes. **NOTE:** Bend plastic flap inside bumper cover clear to access front holes. **See figure 13.** Use 3/8 x 1 ½ bolts and washers on wire (supplied) to access front holes, feed from inside. **See figure 14.** Attach washers and nuts (supplied). **TIGHTEN.**
12. Feed steel angle mounts (supplied) through previously trimmed grille in lower bumper cover. Attach to steel mounting system so that hole at top aligns with lip on chassis cross member. Pull lower bumper downward for hand access. Use 3/8 x 1 ½ bolts, nuts and washers (supplied). **NOTE:** Nut and washer on wire is supplied for drivers side. Feed 3/8 x 1 ½ bolt, flat washer and spring washer (supplied) from inside. With top holes aligned in centre of chassis cross member lip and with steel angle mounts hard against chassis cross member. **TIGHTEN. See figures 15 and 16.**



**WORLD'S BEST
ALLOY BULLBARS**

East Coast Bullbars (ECB Pty Ltd)

Tel: 07 3897 5700

Fax: 07 3283 1168

ecb@ecb.com.au www.ecb.com.au

29 Snook St
Clontarf QLD 4019
Australia

Po Box 122
Margate QLD 4019
Australia

13. Pull lower bumper cover downward and out. Insert drill between lower bumper cover and steel mounting system. Drill 10mm holes through chassis cross member lip using steel angle mounts as a guide. **See figures 17 and 18.** Treat raw metal with rust inhibitor. Use 3/8 x 1 1/2 bolts, nuts and washers. **TIGHTEN.**
14. Feed ECB LED indicator / park light wiring in though fog light area of bumper cover. On vehicles with plastic covers and no original fog lights fitted, drill a hole through plastic cover to feed ECB wiring. Pull plastic inner guard clear to access original indicator wiring; splice ECB LED indicator wiring into original indicator wiring. Use cable locks (supplied). Feed ECB LED park light wiring behind headlight. Splice to original park light wiring. Use cable locks (supplied), access under bonnet.
15. Connect ECB fog light wiring to original fog light wiring. Use wiring kit supplied with fog lights and cable locks (supplied). For vehicles without original fog lights and a fog light protection bar is being installed it will be necessary to wire lights into vehicle via a relay (not supplied).
16. Check all wiring is tradesman like and will not rub through on any metal.
17. Reattach lower plastic air deflector. Trim to fit around steel mounting. **See figure 19.** Reattach plastic inner guards.
18. Fit ECB LED indicator / park lights (supplied) into protection bar as per instructions supplied with the LED indicator kit. **NOTE: Ensure park light is to outside. See figure 20.**
19. Attach ECB fog lights to protection bar. Place M6 x 20 bolts, spring washers (supplied) through light mount from inside and attach nut to top. Slide assembly into light mount in Protection bar and centralize light to hole. **TIGHTEN FIRM ONLY. See figure 21.** Attach ECB plastic fog light trims to protection bar with deflector toward centre.
20. Attach ECB 6mm clip lock trim to rear of protection bar. **NOTE:** Trim off lower edge on an angle so trim will sit flush with end of protection bar. **See figures 22, 23 and 24.** Attach 3mm clip lock to air vent cut outs in skirt. **See figure 25.**
21. Attach ECB protection bar to outside of steel mounting system. Use 3/8 x 1 1/2 bolts, nuts and washers (supplied). **FINGER TIGHTEN ONLY.**
22. Align protection bar with vehicle. **TIGHTEN ALL BOLTS AND NUTS. See figure 26** for side view.
23. Connect ECB LED indicator / park lights and **CHECK OPERATION.**
24. Connect ECB fog lights and **CHECK OPERATION.**
25. Aim ECB fog lights with low beam. **TIGHTEN IN POSITION.**

Note: When fitting/refitting the licence plate to the vehicle, ensure there is no obstruction to licence plate vision in accordance with local authorities. If required relocate licence plate to an alternate location.



**WORLD'S BEST
ALLOY BULLBARS**

East Coast Bullbars (ECB Pty Ltd)

Tel: 07 3897 5700

Fax: 07 3283 1168

ecb@ecb.com.au www.ecb.com.au

29 Snook St
Clontarf QLD 4019
Australia

Po Box 122
Margate QLD 4019
Australia

Further VFPS Notes:

- a) Do not attach VFPS to the vehicle using anchorages not intended for this purpose (e.g. engine mounting bolts).
- b) Do not use this product for any vehicle make or model, other than those specified by the VFPS manufacturer.
- c) Do not remove the plaque or label from the VFPS.
- d) Do not modify the structure of the VFPS in any way.
- e) No accessory or fitment should project forward of the VFPS forward profile.
- f) **ENSURE THESE INSTRUCTIONS ARE LEFT WITH VEHICLE OWNER AND/OR OPERATOR.**

FITTING KIT

1 – Steel mounting system.	1 – Pair ECB fog lights.
1 – Pair steel angle mounts.	1 – Pair ECB fog light surrounds.
12 – 3/8 x 1½ bolts.	2 – M6 x 20 bolts.
2 – 3/8 x 1½ bolts, washers on 250mm wire.	2 – M6 flat washers.
13 – 3/8 nuts.	2 – M6 nuts and spring washers
1 – 3/8 nut and washer on 200mm wire.	10 – Cable locks.
25 – 3/8 flat washers.	1 – 2050mm lengths of black 6mm clip lock trim
14 – 3/8 spring washers.	2 – 440mm lengths of 3mm clip lock trim
1 – ECB LED Indicator / Park light kit.	



Figure 1



Figure 2



**WORLD'S BEST
ALLOY BULLBARS**

East Coast Bullbars (ECB Pty Ltd)

Tel: 07 3897 5700

Fax: 07 3283 1168

ecb@ecb.com.au www.ecb.com.au

29 Snook St
Clontarf QLD 4019
Australia

Po Box 122
Margate QLD 4019
Australia

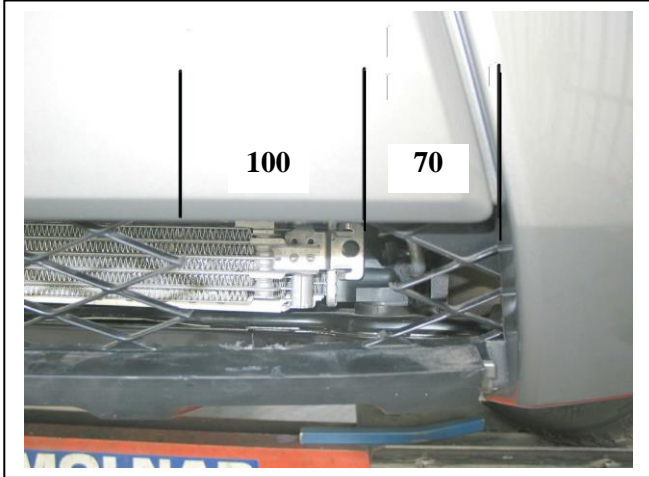


Figure 3

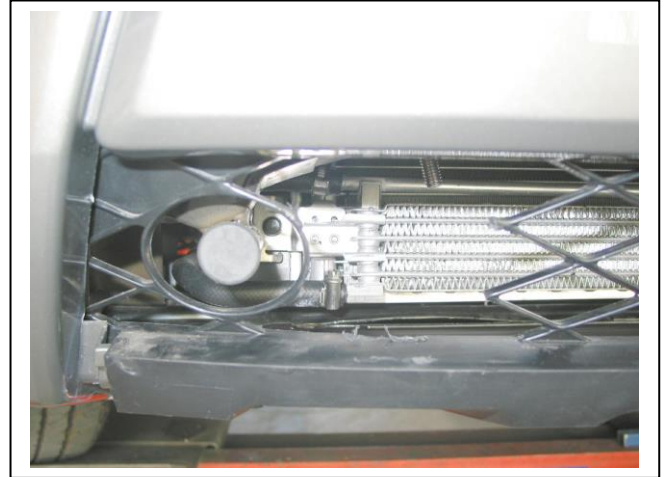


Figure 4



Figure 5



Figure 6



Figure 7



Figure 8



**WORLD'S BEST
ALLOY BULLBARS**

East Coast Bullbars (ECB Pty Ltd)

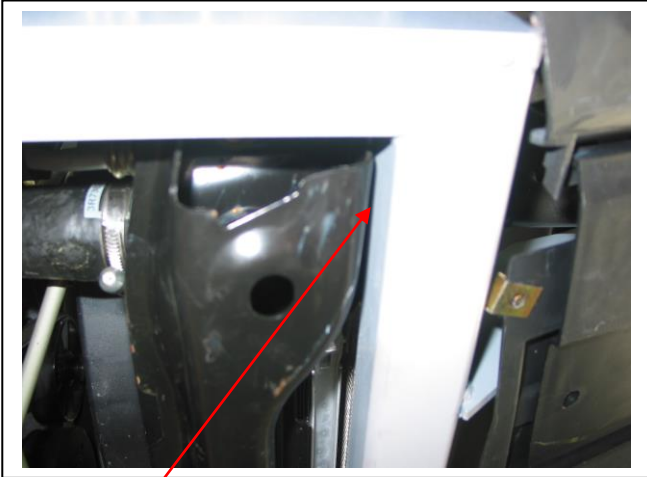
Tel: 07 3897 5700

Fax: 07 3283 1168

ecb@ecb.com.au www.ecb.com.au

29 Snook St
Clontarf QLD 4019
Australia

Po Box 122
Margate QLD 4019
Australia



Hard back against steel radiator support **Figure 9**



Vise grip clamp **Figure 10** Chassis lip

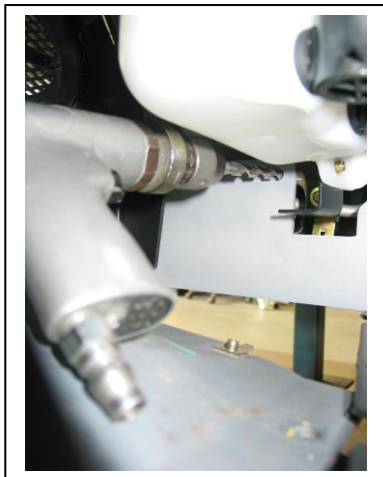


Figure 11 - Passenger side centre shown

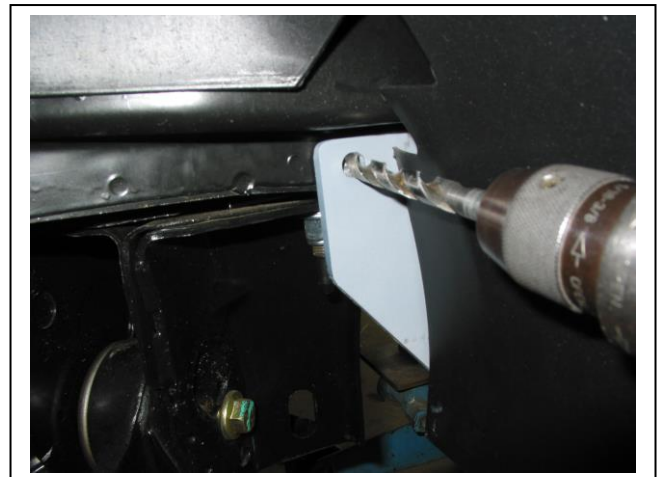


Figure 12 – Drivers side rear shown

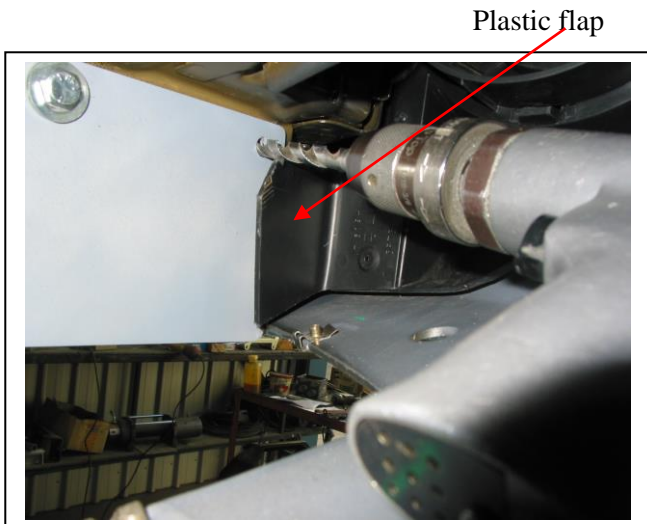
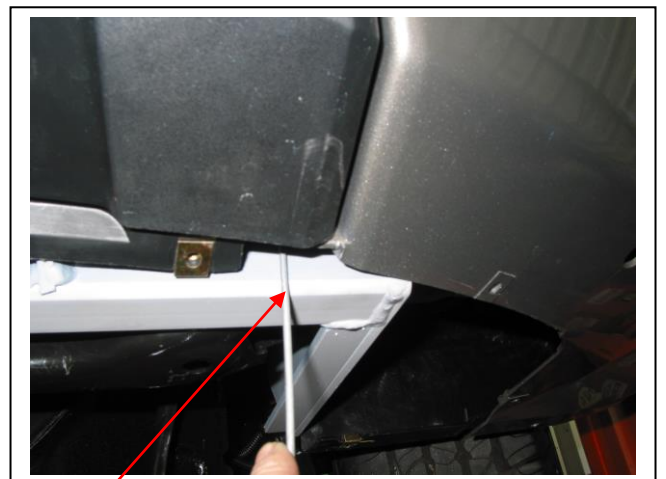


Figure 13 – Drivers side front shown



Bolt on wire **Figure 14**



**WORLD'S BEST
ALLOY BULLBARS**

East Coast Bullbars (ECB Pty Ltd)

Tel: 07 3897 5700

Fax: 07 3283 1168

ecb@ecb.com.au www.ecb.com.au

29 Snook St
Clontarf QLD 4019
Australia

Po Box 122
Margate QLD 4019
Australia

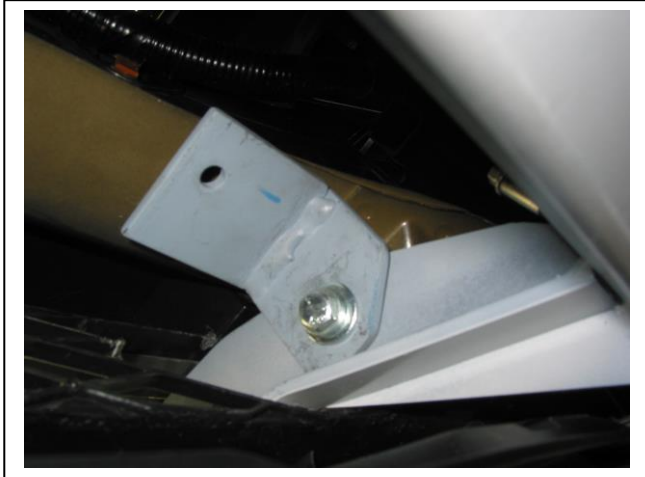


Figure 15 – Steel angle mount shown on drivers side hard against cross member at top

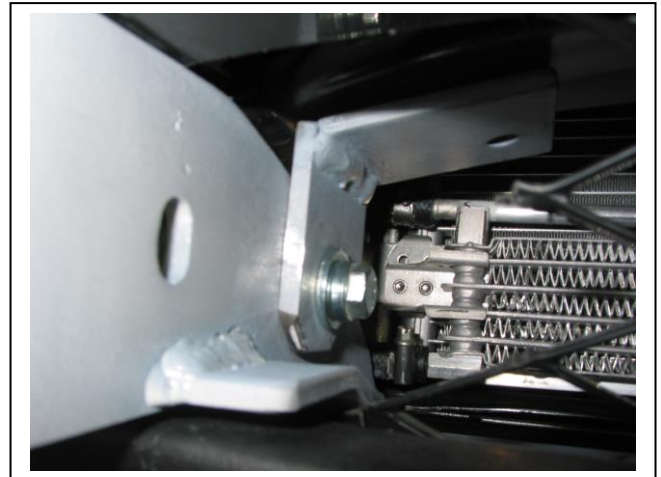


Figure 16 – Drivers side shown



Figure 17– Shown drilling cross member on passenger side

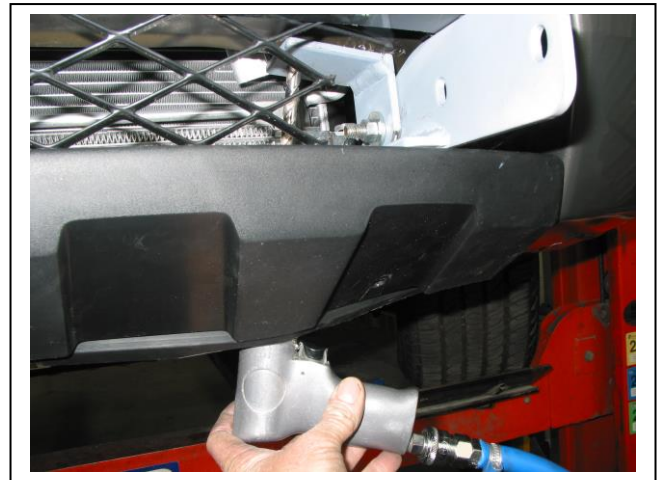


Figure 18

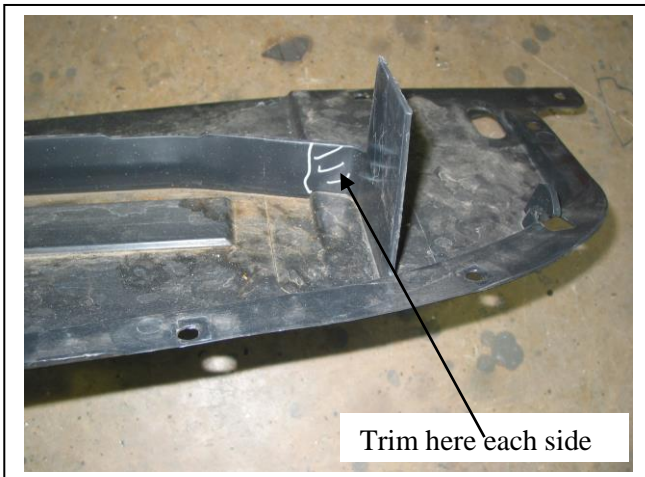


Figure 19

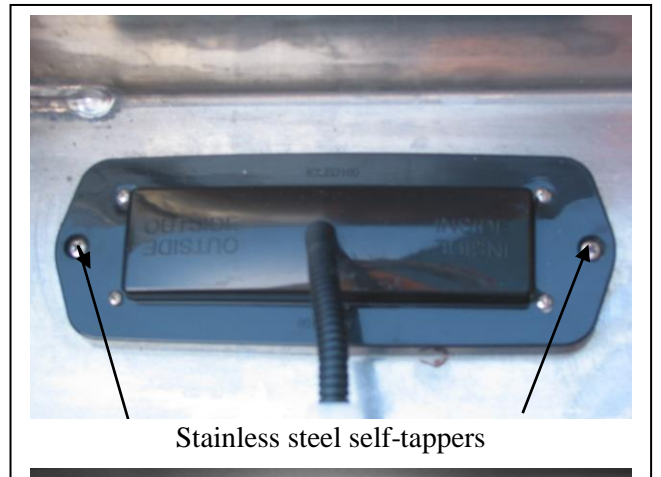


Figure 20



**WORLD'S BEST
ALLOY BULLBARS**

East Coast Bullbars (ECB Pty Ltd)

Tel: 07 3897 5700

Fax: 07 3283 1168

ecb@ecb.com.au www.ecb.com.au

29 Snook St
Clontarf QLD 4019
Australia

Po Box 122
Margate QLD 4019
Australia

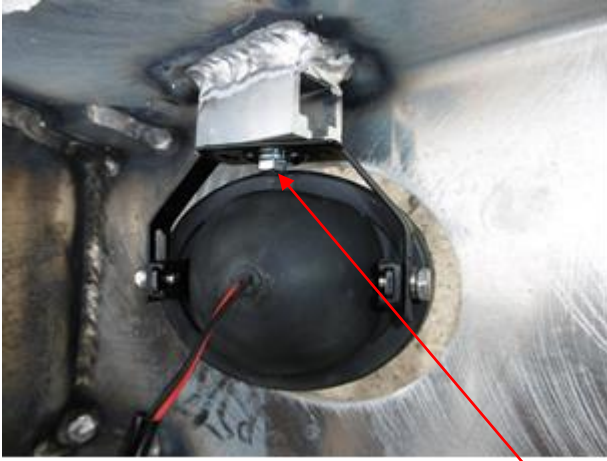
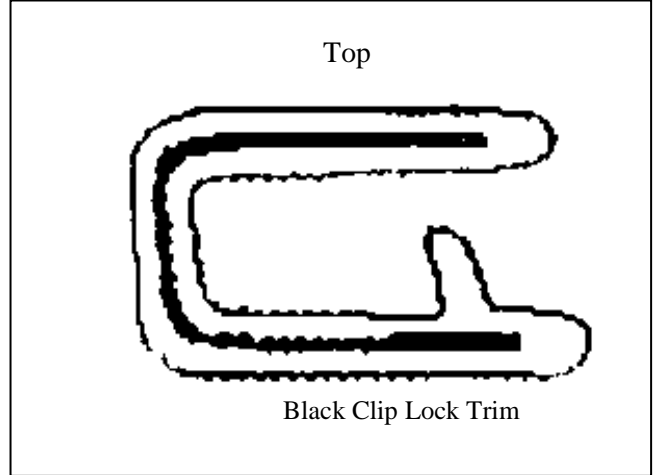
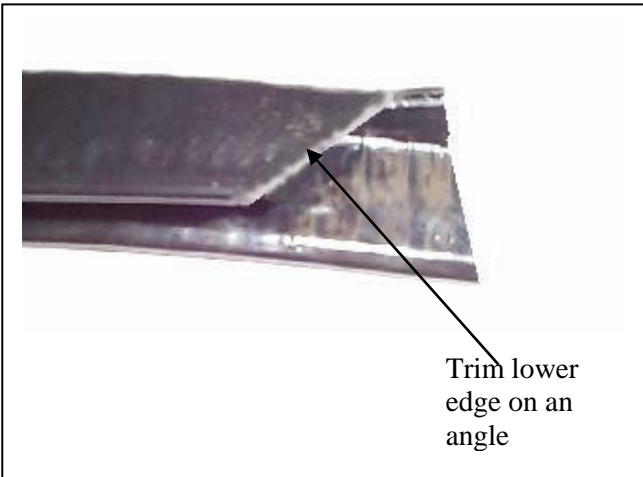


Figure 21 M6 bolt



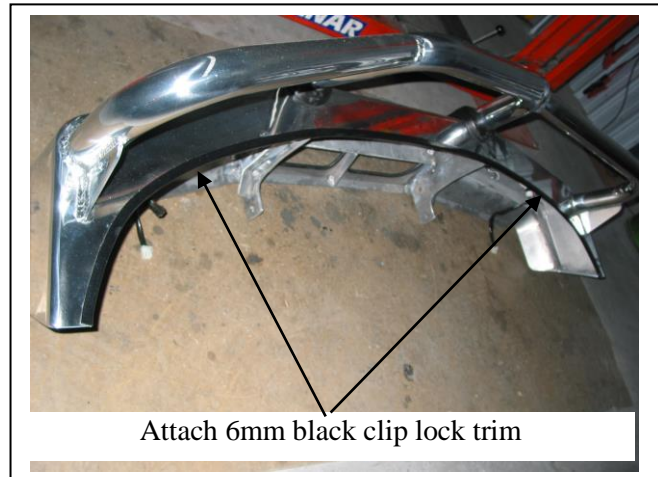
Top
Black Clip Lock Trim

Figure 22



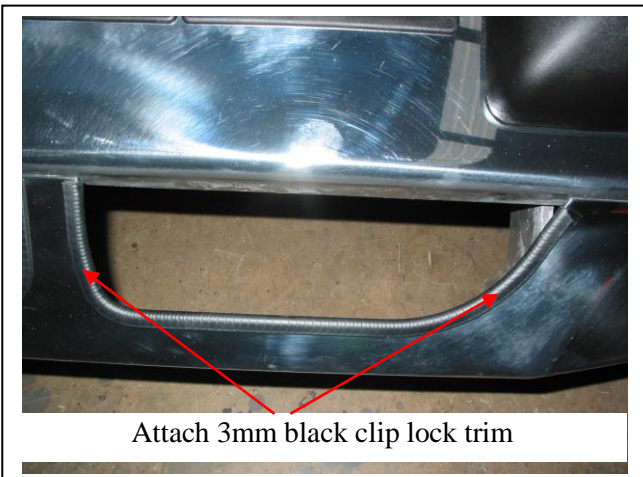
Trim lower
edge on an
angle

Figure 23



Attach 6mm black clip lock trim

Figure 24



Attach 3mm black clip lock trim

Figure 25 – Passenger side shown



Figure 26



**WORLD'S BEST
ALLOY BULLBARS**

East Coast Bullbars (ECB Pty Ltd)

Tel: 07 3897 5700

Fax: 07 3283 1168

ecb@ecb.com.au www.ecb.com.au

29 Snook St
Clontarf QLD 4019
Australia

Po Box 122
Margate QLD 4019
Australia

We value your comments

Dear Fitter,

ECB would like to know how you went with the installation of this product. We value your comment and may need to contact you to clarify some details so please complete your contact details clearly.

We would appreciate if you could complete as many of the following details as possible.

Your Name:	Your contact No.
Product Part No.	Product Invoice No.
Product Description:	Make, model, and year of vehicle:
Product Work Order No.	Company your from/Company product purchased from:

Date of Fitment: ____/____/____

Was the fitting hardware supplied complete?

Yes

No

If no what was not supplied

Did the installation go well?

Yes

No

Please provide comments

Please draw diagrams if you need to.

Post to
Reply Paid 122
PO Box 122
Margate QLD 4019

Fax to
(07) 3283 1168



WORLD'S BEST
ALLOY BULLBARS

East Coast Bullbars (ECB Pty Ltd)

Tel: 07 3897 5700

Fax: 07 3283 1168

ecb@ecb.com.au www.ecb.com.au

29 Snook St
Clontarf QLD 4019
Australia

Po Box 122
Margate QLD 4019
Australia

DESPATCH CHECKLIST BF31SY

ICZBKCF31



Work Order #	
Finish:	
Transport:	
Due Date:	

- OC.....1 – Steel mounting system.
- OC.....1 – Pair steel angle mounts.
- BK.....1 – Bolt kit.
- BK.....1 – ECB LED Indicator / Park light kit.
- BK.....1 – Pair ECB fog lights.
- OC.....1 – Pair ECB fog light surrounds.
- BK.....1 – 2050mm length 6mm clip lock trim.
- BK.....2 – 440mm lengths 3mm clip lock trim.
- OC.....2 – ECB overrides – **Fitted to bar.**
- OC.....3 – 6mm air scoops – **Fitted to bar.**

**See other side of
this page for
photos of all
mounts**



Is this product “the best it can be” Yes _____ / _____
Wrapper's initials / Checker initials

If **NO** fix before continuing

All parts checked and completed by:

Nut and bolts: _____ Date __/__/__

Order control: _____ Date __/__/__

Final wrap check: _____ Date __/__/__



**WORLD'S BEST
ALLOY BULLBARS**

East Coast Bullbars (ECB Pty Ltd)

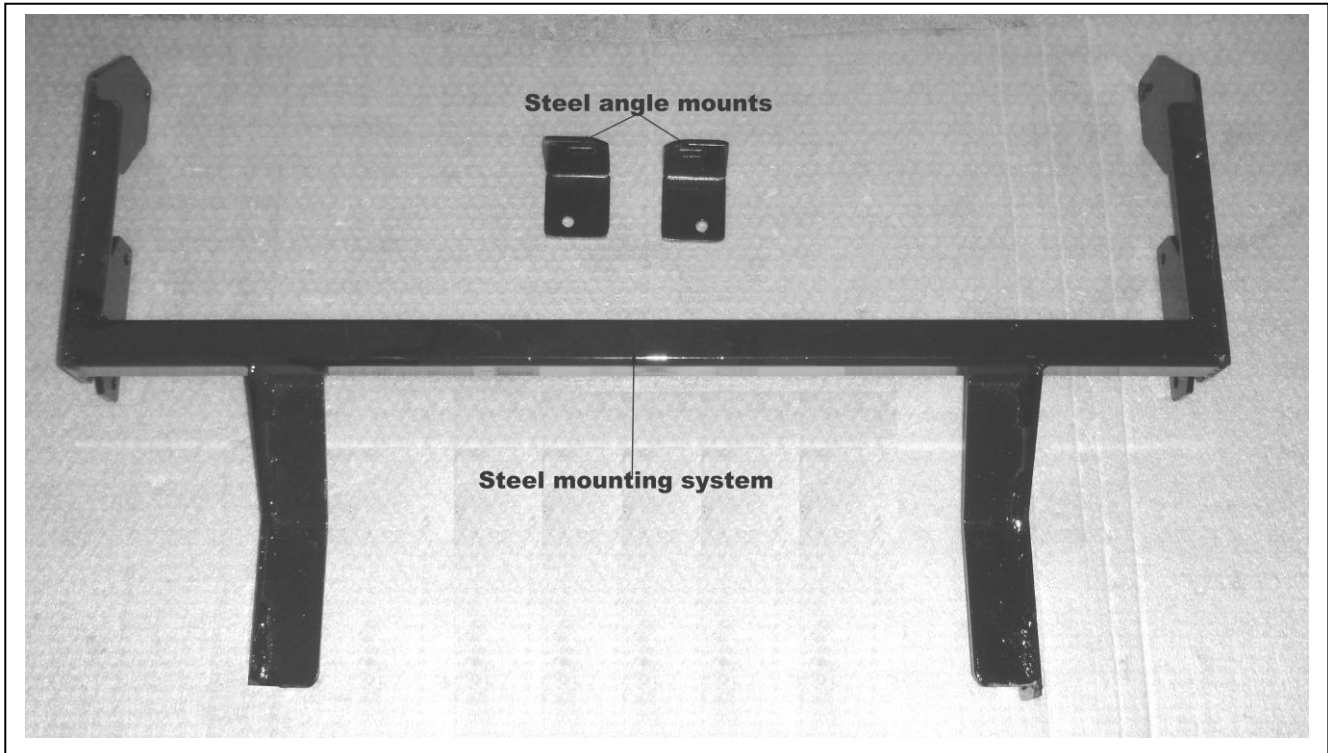
Tel: 07 3897 5700

Fax: 07 3283 1168

ecb@ecb.com.au www.ecb.com.au

29 Snook St
Clontarf QLD 4019
Australia

Po Box 122
Margate QLD 4019
Australia



Check by Order Control: _____

Final Check: _____